

## CPS™ Student Response Systems

### 1. Components

- Software
- CPS RF (receiver)



- CPS Pulse clickers (receiver)



## 2. Software download

- Access the following web page:  
<http://www.einstruction.com/support/downloads>
- Download Response 6.71 for Mac OS or Response™ v6.71 for Windows.



- Open Response installer and follow the instructions to complete the installation of the software in your computer.





- Don't forget to restart your computer after you are finished with the installation process. Only then you'll be able to see the eInstruction icon in the right side of the menu bar.



### 3. Start-up guide

#### a. Open “Response” application

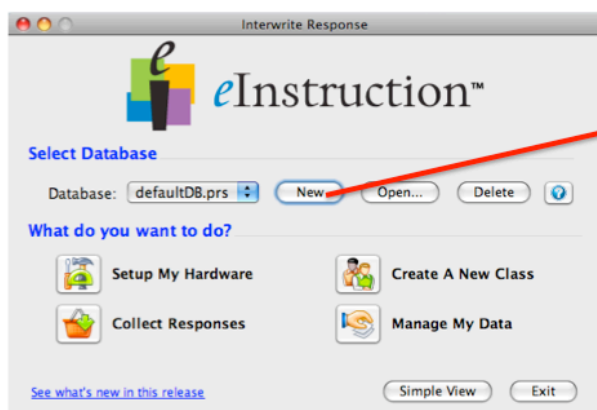
- Click on the eInstruction icon  that appears on your menu bar and open “Response”.

If you don't see the icon, you can access the “Response” application by opening your Applications folder + eInstruction folder + Response folder, and then click on  Response

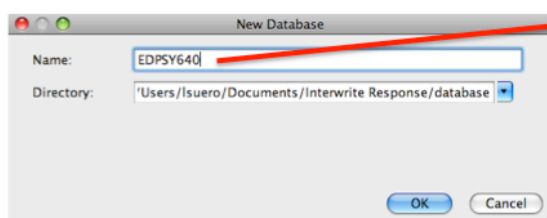
- Once you open “Response” you will see an initial window that explains each of the component of the software.

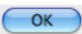
#### b. Create a database

The first thing you want to do before you create a lesson is to create your own database. You can have as many databases as you want. Databases are folders that you use to organize your work.



Click on “New”



Name your database and then click 

**c. Create a class**

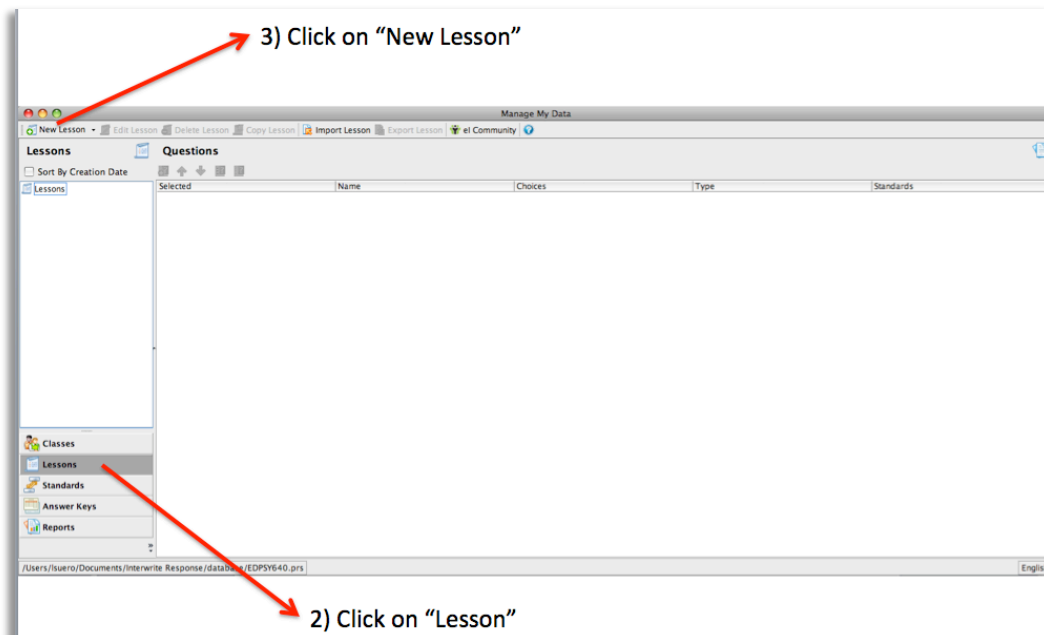


Click to create a new class, then follow the instructions. You can create several classes if you teach different groups of students and you want to keep a records of each student's participation within the different groups.

**d. Create a lesson**



1) Click on "Manage my data"



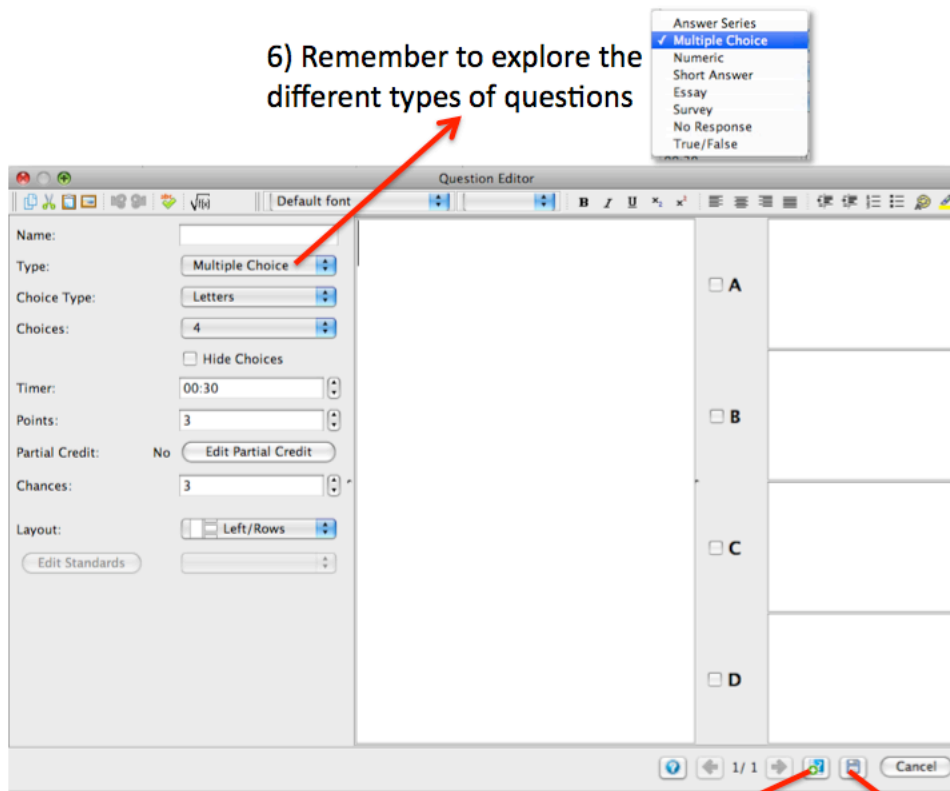
3) Click on "New Lesson"

2) Click on "Lesson"

4) Name your lesson

5) Click on the “New Question” icon  and start creating your questions

6) Remember to explore the different types of questions



7) Click here to add a new question


8) Click here to save your answers (don't forget to save at the end)

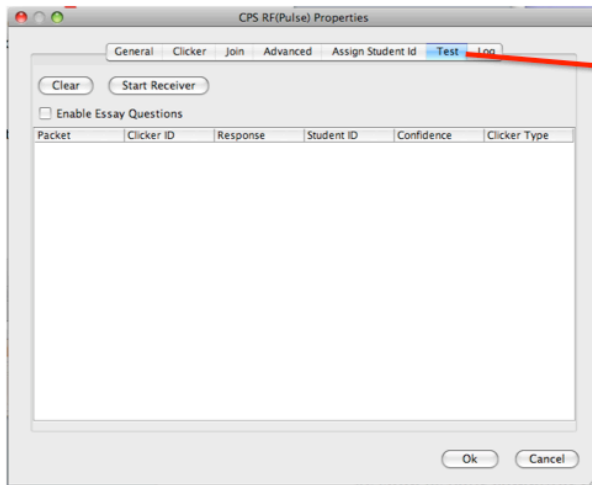
#### e. Test clicker

Before you start the lesson with your students, make sure that the clickers are working.

- Connect the receiver to a USB slot in your computer.



- Click on the eInstruction icon  that appears on your menu bar and open “eInstruction Device Manager”.

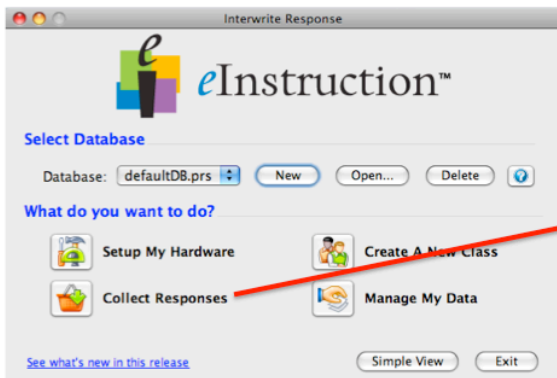


Click on “test”, then “Start Receiver” and start sending answers (any answer) with your clicker. If the clicker is working properly, you will see the response in the screen.

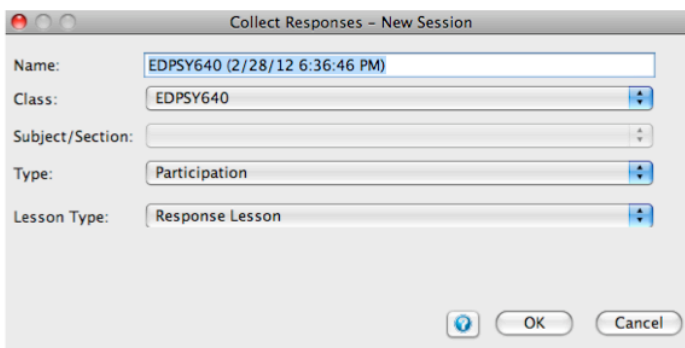
Remember:



#### f. Start your lesson



1) Click on “Collect Response”



2) Select your class and select “Response Lesson” as Lesson Type.

3) Select your class



4) Remember to start the question by clicking in the “start/pause” icon, otherwise the receiver won’t get the answers from the clickers.