

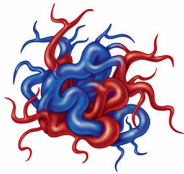
Arteriovenous Malformation

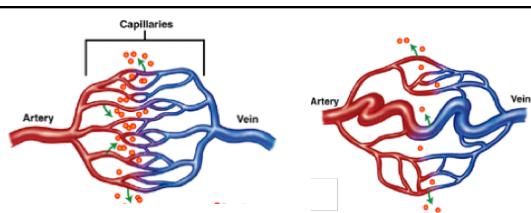


Bethany Werling & Olivia Ave

Definition:

A tangle of abnormal blood vessels connecting arteries and veins in the brain.





Normal: Arteries carry oxygenated blood from the heart to the brain, and veins carry blood with less oxygen away from the brain and back to the heart.

AVM: blood vessels are tangled and they bypass normal brain tissue and diverts blood from the arteries to the veins.
